

RESOLUTION NO. 19/20-29

**RESOLUTION OF THE GOVERNING BOARD OF THE
MT. DIABLO UNIFIED SCHOOL DISTRICT
DESIGNATING ELECTION YEARS FOR TRUSTEE AREAS
IN A BY-TRUSTEE AREA ELECTION PROCESS**

WHEREAS, The Mt. Diablo Unified School District (“District”) has adopted a by-trustee area method of election which is scheduled for approval by the Contra Costa County Committee on School District Organization (the “Committee”) on or about November 13, 2019; and

WHEREAS, the District has requested that the California State Board of Education (“SBE”) waive the requirement that the District’s establishment of trustee areas and adoption of a by-trustee area election process be put to a vote by the electors of the District and the SBE granted that waiver on September 11, 2019; and

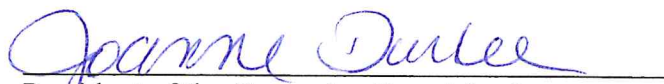
WHEREAS, the approvals of the Committee and SBE will result in the completion of the transition process to a by-trustee area election method; and

WHEREAS, to ensure the orderly transition from an at-large method of election to a by-trustee area method of election and to comply with Education Code section 5021 which provides that each incumbent affected by the redistricting shall nevertheless serve out their term of office for which they were elected, the District proposes to designate the following trustee areas up for election in November of 2020: Areas 3 and 5; and thereafter, in November of 2022, Areas 1, 2, and 4 shall be up for election and so on and so forth. A copy of the District’s trustee area map depicting these areas and that sequence is attached hereto and incorporated herein as Exhibit “A.”

NOW THEREFORE, be it resolved by the Governing Board of the Mt. Diablo Unified School District as follows:

1. That the above recitals are true and correct.
2. That in calling for the next governing board member election, the District shall call for the election to occur in Areas 3 and 5, for November 2020 and Areas 1, 2, and 4 for November 2022, and so on and so forth.
3. That the Superintendent and/or his designee take all actions necessary to effectuate the intent of this Resolution.


ADOPTED, SIGNED AND APPROVED on October 28, 2019.


President of the Governing Board for the
Mt. Diablo Unified School District

I, Robert A. Martinez, Ed.D., Secretary of the Governing Board of the Mt. Diablo Unified School District, do hereby certify that the foregoing Resolution was adopted by the Governing Board of said District at a meeting of said Board held on October 28, 2019, and that it was so

adopted by the following vote:

AYES: 5
NOES: 0
ABSTAIN: 0
ABSENT: 0



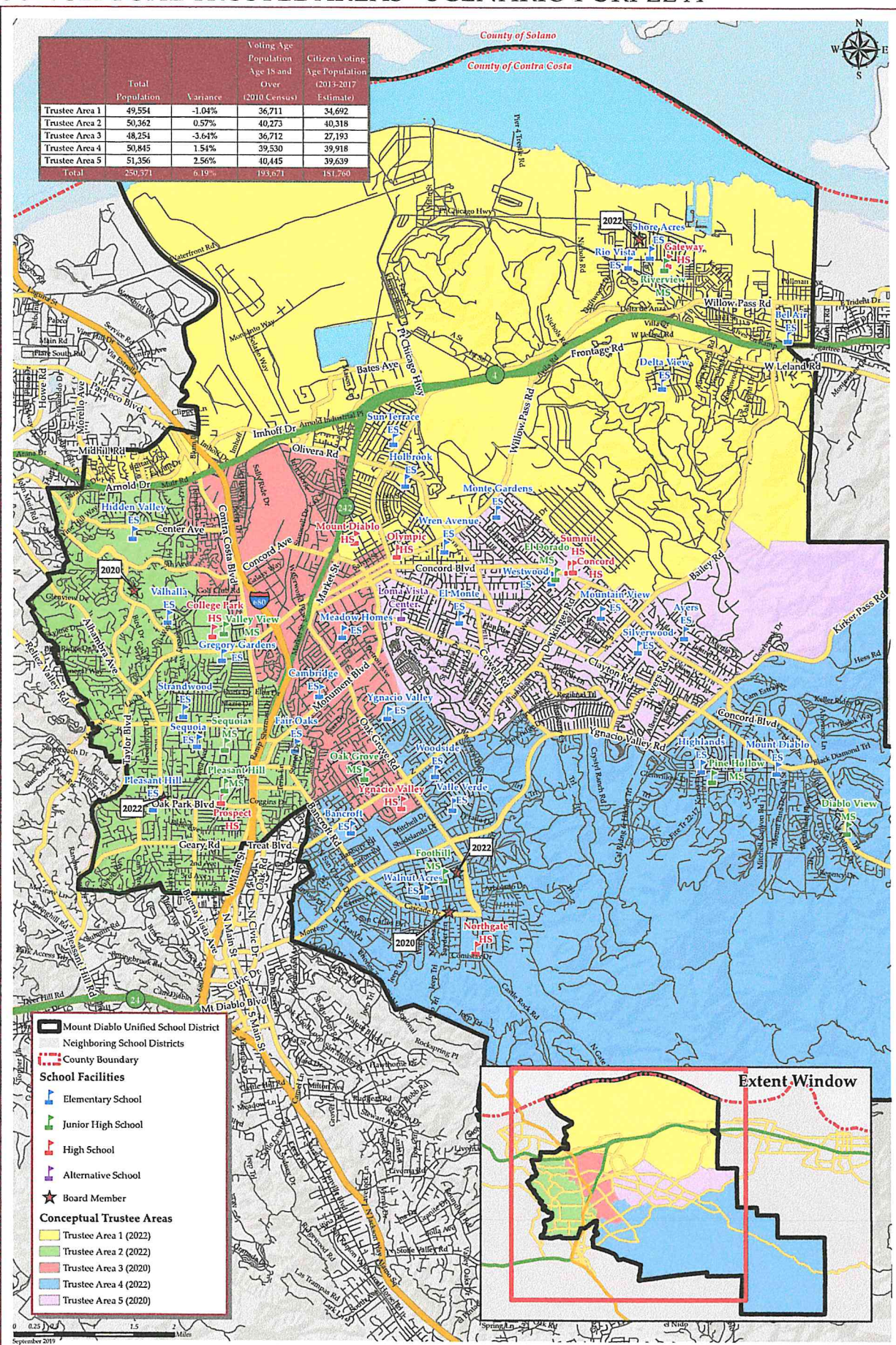
Secretary of the Governing Board of the
Mt. Diablo Unified School District

EXHIBIT "A"

DISTRICT TRUSTEE AREAS

MT DIABLO UNIFIED SCHOOL DISTRICT CONCEPTUAL TRUSTEE AREAS - SCENARIO PURPLE A

	Total Population	Variance	Voting Age Population Age 18 and Over (2010 Census)	Citizen Voting Age Population (2013-2017 Estimate)
Trustee Area 1	49,554	-1.04%	36,711	34,692
Trustee Area 2	50,362	0.57%	40,273	40,318
Trustee Area 3	48,254	-3.64%	36,712	27,193
Trustee Area 4	50,845	1.54%	39,530	39,918
Trustee Area 5	51,356	2.56%	40,445	39,639
Total	250,571	6.19%	193,671	181,760



MT DIABLO UNIFIED SCHOOL DISTRICT
CONCEPTUAL TRUSTEE AREAS - SCENARIO PURPLE A

Total Population (2010 Census)						
	Trustee Area 1	Trustee Area 2	Trustee Area 3	Trustee Area 4	Trustee Area 5	Variance
Population	49,554	50,362	48,251	50,845	51,356	
Population Variance	-520	388	-1,820	771	1,282	6.19%
Hispanic/Latino	18,739	6,053	21,562	4,779	10,157	
	37.82%	12.02%	44.68%	9.40%	19.78%	
White	17,367	35,529	16,939	36,539	31,086	
	35.05%	70.55%	35.10%	71.86%	60.53%	
Black/	3,901	997	2,048	739	1,332	
African American	7.87%	1.98%	4.24%	1.45%	2.59%	
American Indian/	178	118	138	116	159	
Alaska Native	0.36%	0.23%	0.29%	0.23%	0.31%	
Asian	7,078	5,452	5,589	6,501	6,092	
	14.28%	10.83%	11.58%	12.79%	11.86%	
Native Hawaiian/	365	80	353	101	215	
Other Pacific Islander	0.74%	0.16%	0.73%	0.20%	0.42%	
Other	133	91	108	156	137	
	0.27%	0.18%	0.22%	0.27%	0.27%	
Two or More Races	1,793	2,042	1,517	1,534	2,178	
	3.62%	4.05%	3.14%	3.80%	4.24%	

Population 18 and Over (2010 Census)					
	Trustee Area 1	Trustee Area 2	Trustee Area 3	Trustee Area 4	Trustee Area 5
Population	36,711	40,273	36,712	39,530	40,445
Population Variance	-2,023	1,539	-2,022	796	1,711
	-5.22%	3.97%	-5.22%	2.05%	4.42%
Hispanic/Latino	12,082	4,211	14,297	3,244	6,886
	32.91%	10.46%	38.94%	8.21%	17.03%
White	14,656	29,395	14,691	29,354	25,908
	39.92%	72.99%	40.02%	74.26%	64.06%
Black/	2,794	741	1,565	596	1,026
African American	7.61%	1.84%	4.26%	1.51%	2.54%
American Indian/	153	105	113	83	130
Alaska Native	0.42%	0.26%	0.31%	0.21%	0.32%
Asian	5,636	4,664	4,771	5,161	4,997
	15.35%	11.43%	13.00%	13.00%	12.36%
Native Hawaiian/	25	64	245	83	162
Other Pacific Islander	0.70%	0.16%	0.67%	0.21%	0.40%
Other	94	64	73	81	93
	0.26%	0.16%	0.20%	0.20%	0.23%
Two or More Races	1,040	1,089	957	928	1,243
	2.83%	2.70%	2.61%	2.35%	3.07%

Citizens by Voting Age Population Estimate (2013-2017)					
	Trustee Area 1	Trustee Area 2	Trustee Area 3	Trustee Area 4	Trustee Area 5
Population	34,692	40,318	27,193	39,918	39,639
Population Variance	-1,660	3,966	-9,159	3,566	3,287
	-4.57%	10.91%	-25.20%	9.81%	9.04%
Hispanic/Latino	9,039	3,994	6,777	3,716	6,243
	26.05%	9.91%	24.92%	9.31%	15.75%
White	14,960	29,608	13,569	29,618	25,951
	43.12%	73.44%	49.90%	74.20%	65.47%
Black/	3,214	1,076	1,797	531	1,642
African American	9.26%	2.67%	6.61%	1.33%	4.14%
American Indian/	153	70	58	95	88
Alaska Native	0.44%	0.17%	0.21%	0.24%	0.22%
Asian	5,815	3,770	3,695	4,717	4,242
	16.76%	9.35%	13.59%	11.82%	10.70%
Native Hawaiian/	25	194	87	70	120
Other Pacific Islander	0.74%	0.48%	0.32%	0.18%	0.30%
Other	0	0	0	0	0
	0.00%	0.00%	0.00%	0.00%	0.00%
Two or More Races	1,256	1,606	1,210	1,171	1,353
	3.62%	3.98%	4.45%	2.93%	3.41%

ACS Age Groups (2017 Estimates) ¹¹					
	Trustee Area 1	Trustee Area 2	Trustee Area 3	Trustee Area 4	Trustee Area 5
Under 18 Years Old	24.53%	19.16%	22.88%	21.49%	19.90%
18-24 Years Old	10.06%	6.58%	9.71%	6.13%	7.67%
25-34 Years Old	14.82%	14.21%	19.97%	9.81%	14.66%
35-44 Years Old	28.01%	28.99%	26.72%	27.31%	26.77%
55-64 Years Old	12.60%	14.74%	10.96%	15.13%	14.32%
Over 64 Years Old	9.98%	17.20%	9.76%	20.13%	16.68%
Total	100.00%	100.00%	100.00%	100.00%	100.00%

ACS Renters vs Owners (2017 Estimates) ¹¹					
	Trustee Area 1	Trustee Area 2	Trustee Area 3	Trustee Area 4	Trustee Area 5
Total Owners	61.13%	62.82%	56.51%	81.54%	68.67%
Total Renters	38.87%	37.18%	43.49%	18.46%	31.33%
Total	100.00%	100.00%	100.00%	100.00%	100.00%

ACS Profile Income by Household (2017 Estimated) ¹¹					
	Trustee Area 1	Trustee Area 2	Trustee Area 3	Trustee Area 4	Trustee Area 5
Income \$0-25k	18.09%	11.48%	19.21%	7.72%	11.19%
Income \$25-50k	19.25%	11.17%	24.06%	10.14%	14.60%
Income \$50-100k	31.16%	24.58%	32.14%	23.10%	31.19%
Income \$100-150k	16.30%	22.47%	16.05%	18.41%	24.99%
Income \$150k+	15.19%	30.28%	8.56%	40.63%	18.04%
Total	100.00%	100.00%	100.00%	100.00%	100.00%

¹¹ Based off estimates prepared by the Census Bureau

School Boundaries					
	Trustee Area 1	Trustee Area 2	Trustee Area 3	Trustee Area 4	Trustee Area 5
Ayers ES		Fair Oaks ES	Bancroft ES	Ayers ES	Ayers ES
Bel Air ES		Gregory Gardens ES	Cambridge ES	Bancroft ES	El Monte ES
Delta View ES		Hidden Valley ES	El Monte ES	Highlands ES	Highlands ES
Halbrook ES		Pleasant Hill ES	Fair Oaks ES	Mt. Diablo ES	Monte Gardens ES
Hidden Valley ES		Strandwood ES	Gregory Gardens ES	Valle Verde ES	Mountain View ES
Monte Gardens ES		Vallhalla ES	Hidden Valley ES	Walnut Acres ES	Silverwood ES
Mountain View ES		Pleasant Hill MS	Holbrook ES	Woodside ES	Westwood ES
Rio Vista ES		Valley View MS	Meadow Homes ES	Foothill MS	Woodside ES
Shores Acres ES		College Park HS	Sun Terrace ES	Oak Grove MS	Wren Avenue ES
Sun Terrace ES		Ygnacio Valley HS	Woodside ES	Pine Hollow MS	El Dorado MS
West Wood ES			Wren Avenue ES	Choice HS	Foothill MS
Wren Avenue ES			Ygnacio Valley ES	Northgate HS	Oak Grove MS
El Dorado MS			El Dorado MS	Ygnacio Valley HS	Pine Hollow MS
Pine Hollow MS			Oak Grove MS		Choice HS
Riverview MS			Pleasant Hill MS		Concord HS
Valley View MS			Valley View MS		Mt. Diablo HS
Choice HS			College Park HS		Northgate HS
College Park HS			Mt. Diablo HS		Ygnacio Valley HS
Concord HS			Ygnacio Valley HS		
Mt. Diablo HS					